



PowerForms
for SharePoint

Installation Guide





Contents

1. Running the Installer	3
2. Activating PowerForms	6
2.1 SharePoint 2010.....	6
2.2 SharePoint 2007 / WSS 3.0.....	6
3. Installing to an additional site collection	7
4. Upgrading an existing installation.....	7
5. Upgrading the license.....	7
6. Uninstalling.....	7
7. Getting Support	7
Knowledge Base.....	7
Forums.....	8
Blog.....	8
Mail Support.....	8

1. Running the Installer

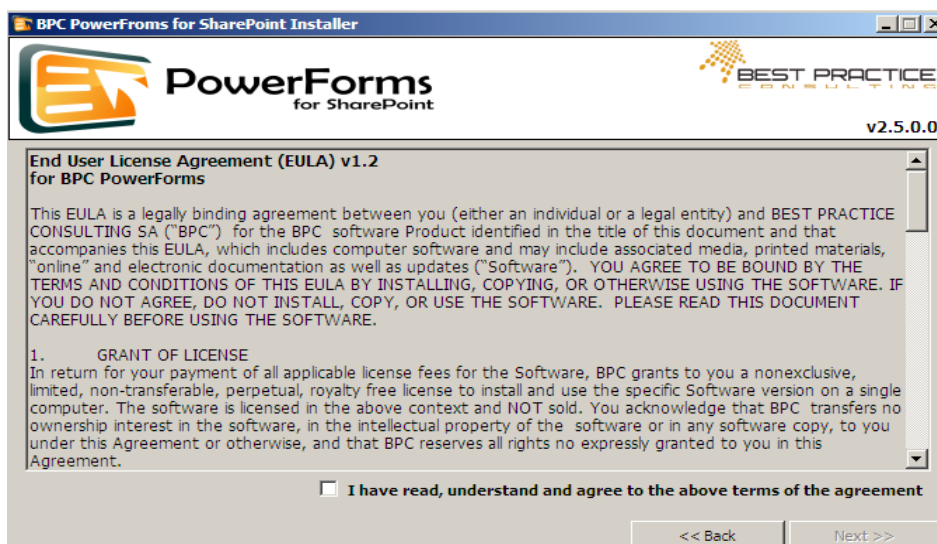
1. Login to the server as a Farm and Site Collection administrator so that you have sufficient privileges to deploy solutions and features. Extract the installation archive to a local drive. Right click the *BPC.PowerForms.Setup.exe* and select "Run As Administrator" to start the installation process.

NOTE: The SharePoint timer service must be running on all Web Front End and Application servers in the Farm for BPC PowerForms to be installed.

2. Click "Next" on the Installation Wizard welcome page.



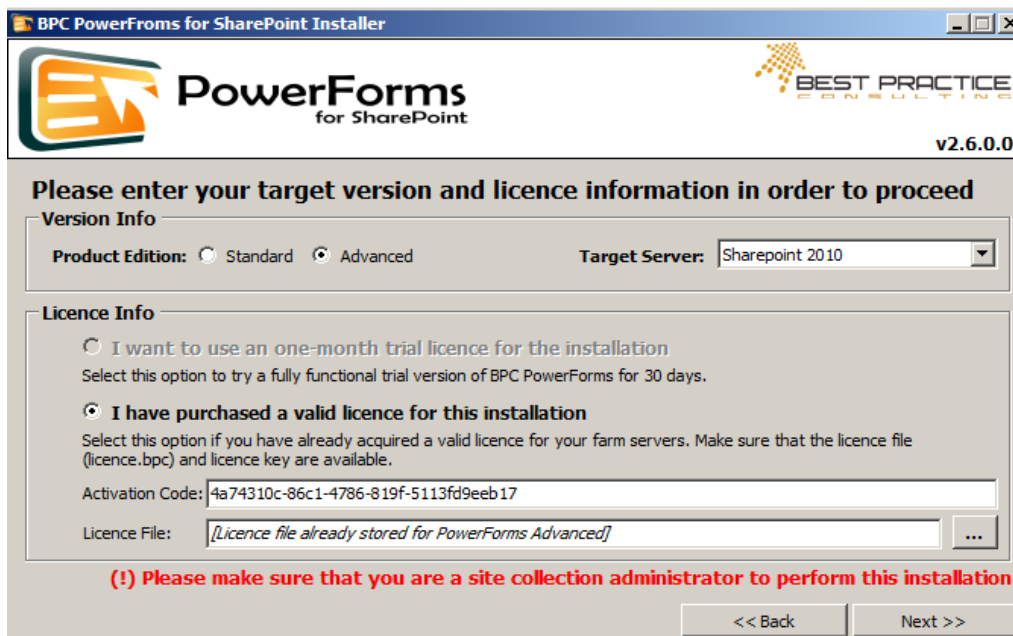
3. Read the End-User License Agreement carefully. You must check the "I have read, understand and agree with the above terms" checkbox for the installer to continue. Click "Next".



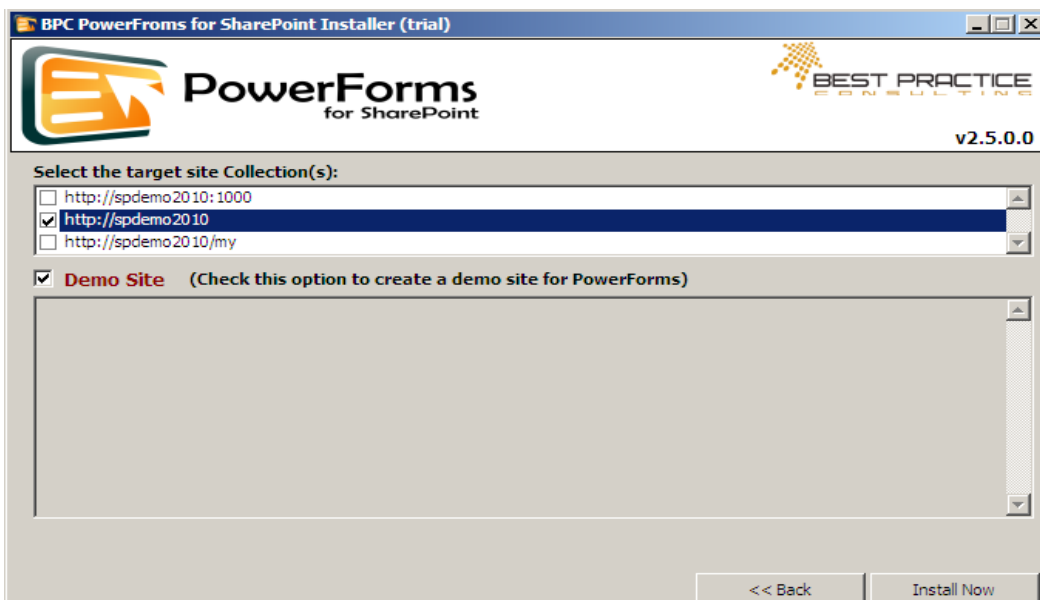


4. Select the edition you want to install by selecting either the Standard or the Advanced radio buttons. Select the target SharePoint Version for the installation from the "Target Server" combo box. Choose your license info between trial and commercial licenses.

If you select trial, the installer will configure for you a fully functional trial version that will remain operational for 30 days. If you select the commercial license, you will need to have available your activation code and the license file (in a folder accessible from the server). Type your activation code in the "Activation Code" text box. Find your license file by using the "..." button next to the "License File" textbox. Click "Next".



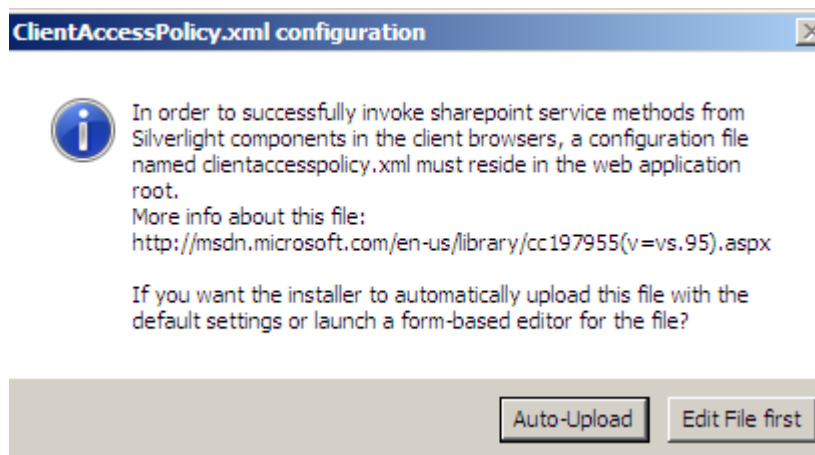
5. Select the target site collection for this installation from the "Site Collection URL" list box and click "Install Now" for the installation to begin.



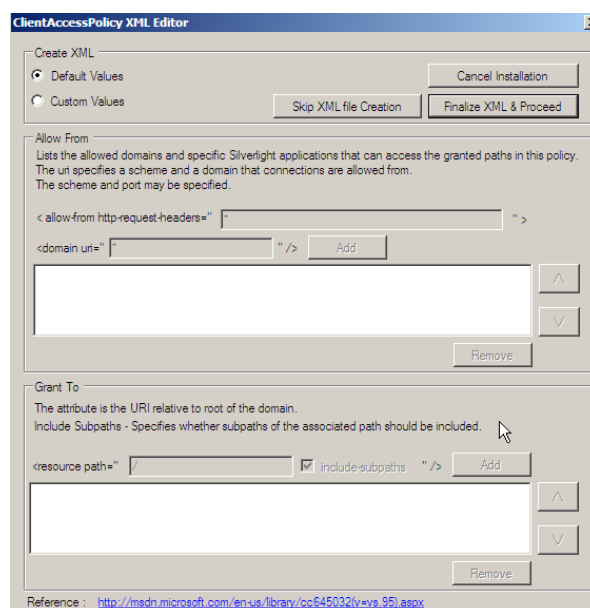
If you check the *"Demo Site"* check box a demo site for BPC PowerForms will automatically be created by the installer in the target site collection. The site contains several custom lists with BPC PowerForms enabled. The list forms demonstrate a wide range of BPC PowerForms capabilities and can be used as development examples, providing a jump start for your own forms.

After a while the *Installation Completed* message will appear. Click the *"Close"* button to conclude the installation.

6. During the installation the installer might offer to auto-upload for you the required `clientaccesspolicy.xml` file if the file is not already present in your SharePoint installation.



Click *"Auto-Upload"* to let the installer take care of the details (recommended) or click *"Edit File first"* to launch the property editor





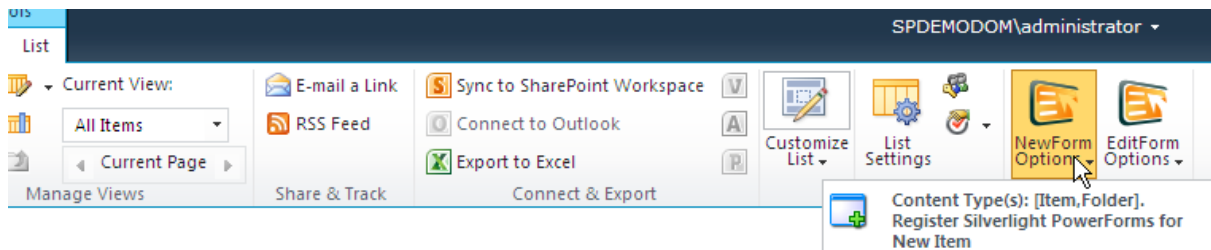
If you choose to upload the file later after editing, please make sure that it exists and is readable / accesible by all SharePoint users in the “\inetpub\wwroot\wss\VirtualDirectories\80” folder of your SharePoint installation disk.

More information about this file and the editing properties and window can be found in [http://msdn.microsoft.com/en-us/library/cc197955\(v=vs.95\).aspx](http://msdn.microsoft.com/en-us/library/cc197955(v=vs.95).aspx)

2. Activating PowerForms

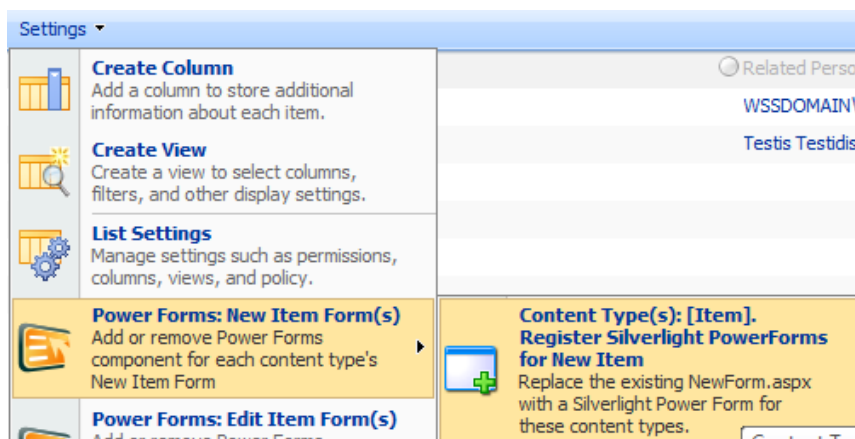
2.1 SharePoint 2010

To activate PowerForms in a SharePoint 2010 custom list or document library, new options are installed in the “List” or “Library” Ribbon area. Select the “Register Silverlight PowerForms for New (Edit) Item” to create an initial PowerForms form.



2.2 SharePoint 2007 / WSS 3.0

To activate PowerForms in a SharePoint 2007 (or wss 3.0) custom list or document library, new options are installed in the “Settings” menu of each custom list or document library. . Select the “Replace the existing form with a Silverlight PowerForms” to create an initial PowerForms form.





After activation, a default PowerForms form will open when accessing the New or Edit functions of the Custom List / Document Library. You are ready to start designing your forms.

3. Installing to an additional site collection

To install PowerForms to an additional site collection just re-run the installer and select the appropriate site collection at step 5.

4. Upgrading an existing installation

To upgrade an installed version of PowerForms run the new installer (check the version on the lower right corner of the wizard headers). The installer will perform an in place upgrade of PowerForms.

5. Upgrading the license

To upgrade an installed or expired trial license just re-run the installer and provide the required information in step 4.

6. Uninstalling

If you need to uninstall PowerForms you must perform the following steps:

1. go to the Site Collection Features and deactivate the PowerForms feature
2. go to Central Administration Solution management and retract the PowerForms solution.
3. manually delete the BPC PowerForms demo site if you had it created during the installation process

If you have deployed PowerForms to more than once Site Collections in the farm repeat step one for all those Site Collections.

7. Getting Support

Knowledge Base

Visit our Knowledge Base at <http://www.bpc-components.com> to gain insight on how to use some of BPC PowerForms more advanced features in articles that contain step by step detailed information.



Forums

The forums (<http://www.bpc-components.com/forums>) is the best place to share information, get support and suggestions as well as propose new features for BPC PowerForms.

Blog

We periodically update our Blog (<http://www.bpc-components.com/blog>) with tutorials, guides and interesting information about BPC Products including PowerForms.

Mail Support

If you have an active Software Assurance and Basic Support pack please contact us at support@bpc-components.com mentioning your issues and your activation code.